

# Business Intelligence

Fast  
and  
Easy



## **Data Access Europe BV**

Lansinkesweg 4  
7553 AE Hengelo, the Netherlands  
Tel +31 (0)74 2555609  
FAX +31 (0)74 2503466  
Email [info@dataaccess.nl](mailto:info@dataaccess.nl)  
[www.dataaccess.nl](http://www.dataaccess.nl)



*Data Access Worldwide builds, markets and distributes tools for database software development*

## ***Business Intelligence***

*Activated Information*

*Set & Forget Configuration*

*Easy to Create Business Reports*

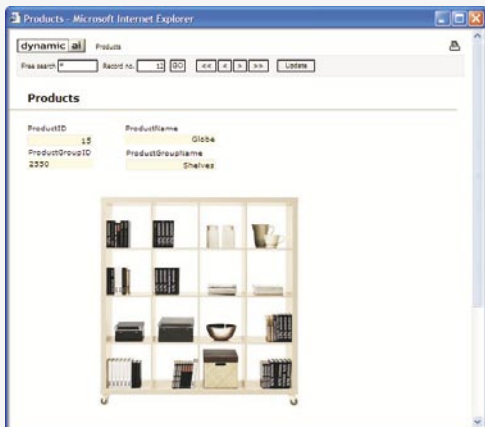
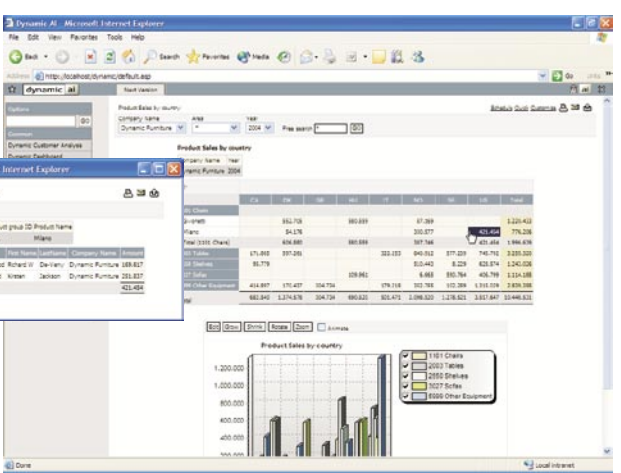
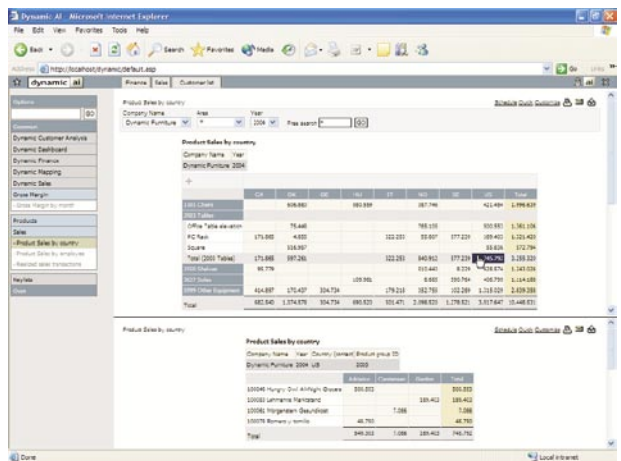
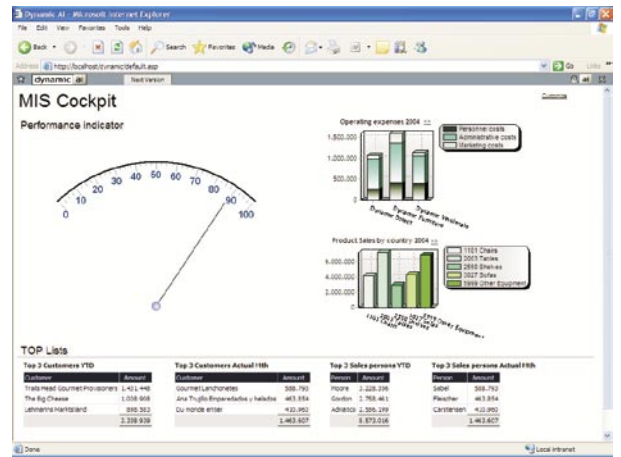
*High Performance*

*100% Real-time, Browser based*

**[www.dynamic-ai.nl](http://www.dynamic-ai.nl)**

## WEB-BASED REPORTING WITH DYNAMIC AI

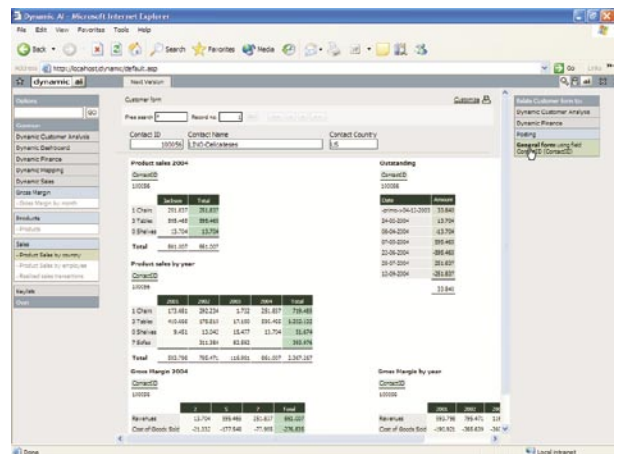
- Use a standard Microsoft Internet Explorer to login to your Dynamic AI account with your personal preferences for styles, language settings and assigned reports, listings, portal pages and forms.
- Your zero-footprint, real-time generated application appears with your freely designed start-page showing you the most important key information. Start-pages can also be used to show pending tasks such as entity maintenance, to-do tasks etc.
- Browse directly to full featured reports from the start page, from drill-down menu's or from your full menu available on the left side of the screen. All menu's reflect your personal access, customization and data maintenance rights.
- Parameterize data for your reports using defaults, selected values from drop-down list boxes, free parameter input with wild-cards or free-search across the data-columns of your choice. Or simply use the reports to drill-into the selected area of interest and investigate as many levels of relevant details that you need.
- Drill-down in a 2-pane standard window or pop-up a report into its window whenever you desire.
- You might (if the report has been defined that way) drill-across several back-end databases and data-sources, all transparently integrated into your report analysis.



Product Sales by country

Company Name	Year	Country	Revenue
10004	2004	China	~4,000,000
10002	2004	France	~3,000,000
10006	2004	USA	~2,000,000

- Depending on assigned user rights, the user can customize existing reports, create own copies or share information with centrally controlled groups of users.
- Export or link information into Microsoft Excel, E-mail reports or export CSV formatted files from any report that you desire.



## HOW TO CREATE RESULTS, FAST...

- Define central connections to your relational databases (Oracle, IBM DB2, MS SQL Server, Sybase, Informix, MS Access, Interbase, Pervasive.SQL or ODBC based database connections).
- Select a table, view or Dynamic View to explore.
- Use the auto List/Form directly or use the data as the basis for creating reports, listings, graphs and forms.
- Build your list and reports by selecting dimensions to group and filter the data and select the columns to aggregate.
- Insert the report and you are ready to analyze your data in real-time.
- Build your form presentation based on selected columns, list box definitions, inserted reports based on related information.
- Update, insert and delete data from list tables or from forms wherever required.
- Fast and cost effective.
- Fully integrated user, rights and style control.
- 100% Browser based administration, development and delivery of Business Reports!

The image shows a sequence of screenshots from the Dynamics AX Microsoft Internet Explorer interface, illustrating the workflow from database connection to report generation. Red boxes highlight key UI elements across various panels:

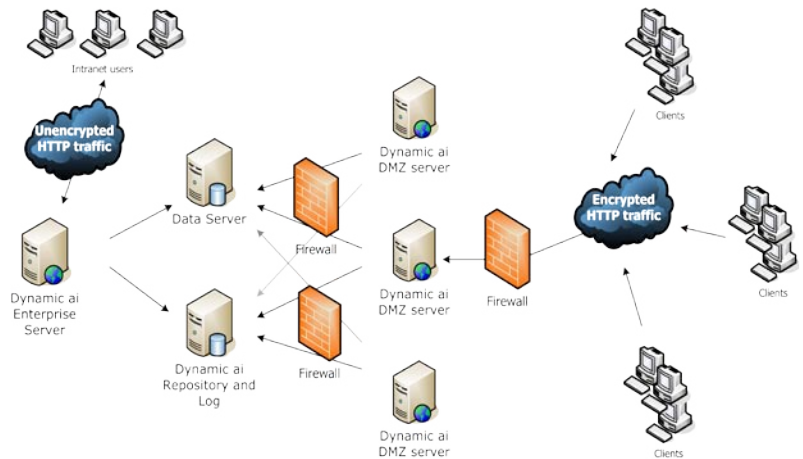
- Connections Panel:** Shows a list of database connections, with one highlighted by a red box.
- Table Selection Panel:** Shows a list of tables, with one highlighted by a red box.
- List View Panel:** Shows a data table with columns and rows, with a 'List View' button highlighted by a red box.
- Form Panel:** Shows a form with various fields and buttons, with a 'Form' button highlighted by a red box.
- Products Panel:** Shows a list of products, with a 'Products' button highlighted by a red box.

Arrows indicate the flow of the process, starting from the 'Connections' panel, moving to the 'Table' selection, then to the 'List View' or 'Form' panels, and finally to the 'Products' panel.

# SYSTEM ARCHITECTURE

Dynamic AI is a centrally installed application server service hosted on a Microsoft Internet Information server (IIS).

The diagram illustrates a scenario with Dynamic AI in a secure, hi-availability, scalable Enterprise setup. The communication between the Dynamic AI server and the Browser clients is pure HTTP or HTTPS traffic. No data-access drivers need to be installed on the clients.



# TECHNICAL SPECIFICATIONS

## Dynamic AI repository features

- **Connect via OLEDB**
  - Microsoft SQL Server
  - Oracle
  - IBM DB2
  - Sybase
  - Sybase Adaptive Server
  - Informix
  - Pervasive.SQL
  - Interbase
  - Various ODBC data sources incl.
    - Microsoft Access
    - Excel spreadsheet

## Dynamic AI repository features

- **Dynamic AI Dictionary**
  - Captions and help-text settings
  - Parameter combo/list box definitions
  - Data partition definitions
- **Dynamic AI Relations**
  - Cross database relations
  - Sub-form/sub-list presentations
  - Drill down to related reports
- **Dynamic AI Views**
  - Freely entered SQL statements
  - Free parameters
  - Partitioning

## Dynamic AI security features

- **Password rules**
  - Minimum password length
  - Minimum no. alphabetical characters
  - Minimum no. numeric characters
  - Password expire days
  - Password history
  - Maximum failed login attempts
  - User role security
  - File-caching
- **Indirect security features**
  - Last login information
  - No username and password caching
  - Random Session ID's
  - Read-only access to executables
  - Encryption and hashing
- **User accounts**
  - Restrict to server
  - Account expiration
  - User must change password

- Granular assigned user rights
- Roles and alias settings
- Certificate Organization

## Dynamic AI presentation features

- **Dynamic AI Report types**
  - Scrollable lists
  - Editable lists
  - Pivot tables
  - Grouped tables
  - Forms
  - Parameter pages
  - 3D business graphics
  - Dashboards (multiple reports)
- **Dynamic AI Styles**
  - Form styles
  - List styles
  - Graph templates
- **Dynamic AI report features**
  - Expand/Collapse
  - Drill-down
  - Related drill down (drill through)
  - Filtering
  - Open results in new browser window
- **Dynamic AI general list functionality**
  - Row & column grouping
  - List hierarchy definitions
  - Column merge
  - Primo/ultimo cutter
  - Subtotal definitions
  - Sum
  - Average
  - Count
  - Count distinct
  - Running sum
  - Percent of total
  - Report type presentation with company name / logo
  - Calculate grand totals
  - Aggregate calculations
  - Calculate extra columns
  - Hide totals
  - Unbalanced tree
  - Free search filter
  - Select data filter
  - Compare data filter
  - Filter operators
  - Key value lists
  - Data driven combo-boxes
  - Dynamic AI list edit functionality
  - Delete, update and insert data

- Cut, copy and paste
- Cursor handling
- Free selection
- Keyboard shortcuts to functions

- **Dynamic AI general form Functionality**
  - Automatic form creation
  - Drag and drop layout design
  - Insert other Dynamic AI report
  - Insert www pages
  - Insert pictures
  - Insert lines and boxes
  - Free color and font definitions
  - Insert links
  - Insert free text anywhere
  - Object resizing

## Other features

- **Dynamic AI Informers**
  - Define watches on calculated totals
  - Alarm reported in Dynamic
  - Alarm by email or other online medium
- **Dynamic AI report export**
  - Export report as CSV, or PDF
  - Export report to Excel
  - Link report in Excel
  - E-mail Dynamic AI reports
- **Dynamic AI Application wrap up**
  - Report packages
  - Dashboards with links or Inserted reports
  - Workflow definitions
  - Approval definitions

## Server hardware requirements

- Pentium III processor, min. 250 MHz
- 12 Mbytes disk space, 200 Mbytes recommended for log file growth etc
- 128 Mbytes Ram plus 5 Mbytes per user, 256 Mbytes recommended

## Server software requirements

- Windows XP, 2000 or NT 4.0, IIS
- Microsoft Data Access Components

## Browser requirements

- Internet Explorer version 5.5 and higher